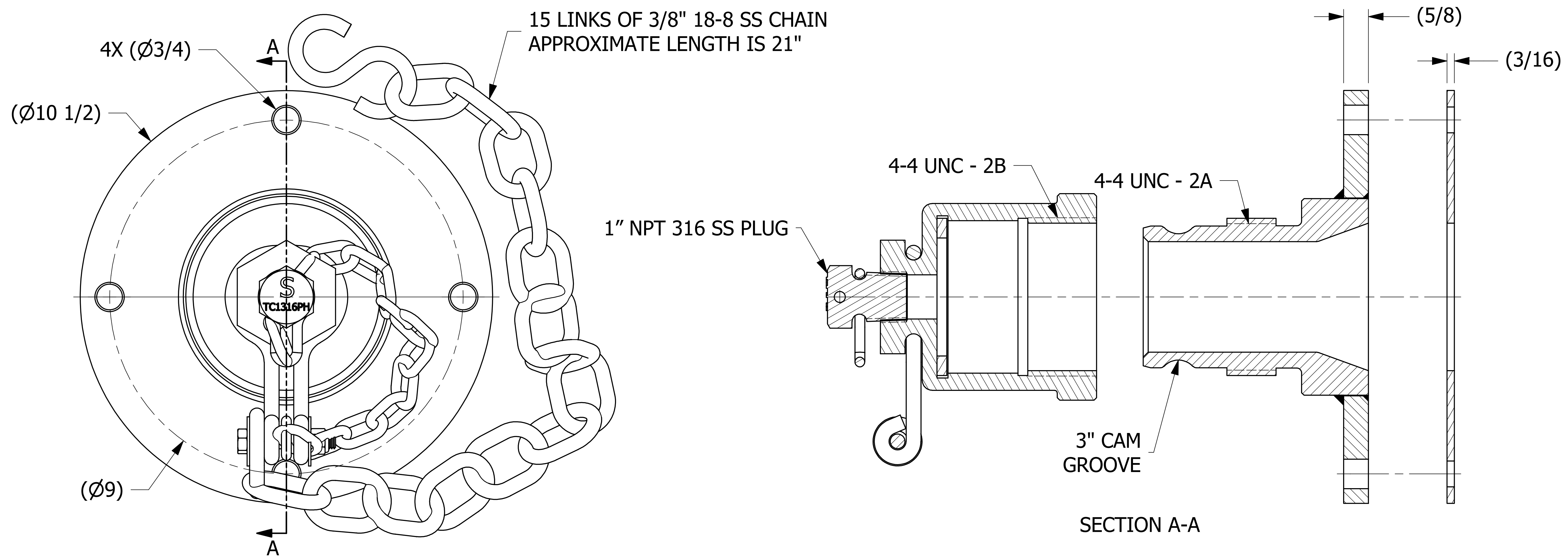


SALES DRAWING SALES DRAWING

SALES DRAWING SALES DRAWING



- NOTES:
1. AAR APPROVAL# E-149523.
 2. GASKETS MATERIAL: BLACK VITON A.
 3. FITS JAMESBURY 4" BALL VALVE (9.00" BC).
 4. APPROXIMATE HEIGHT = 9".
 5. THIS ASSEMBLY IS AAR AND DOT APPROVED.
 6. QUICK CONNECT MEETS A-A-59326D.
 7. CAP MATERIAL: 416 SS.
 8. FLANGE MATERIAL: 316 SS.

UNLESS OTHERWISE SPECIFIED DIMENSIONAL TOLERANCES FRACTIONAL: ±1/16 X.XX: ±.03 X.XXX: ±.015 ANGULAR: ±1° DEBURR ALL SHARP EDGES. ALL MACHINED SURFACES TO HAVE A 125 RMS FINISH UNLESS NOTED OTHERWISE. THIRD ANGLE PROJECTION	DRAWN BY:	JG
	CHECKED BY:	CHL
	PROTOTYPE BY:	JG
	PROTOTYPE DATE:	7/2/2015
	APPROVED FOR PRODUCTION BY:	CHL
	PRODUCTION DATE:	8/10/2015

B	RJP	3-29-16	UPDATED TE3S416DC6A GEOMETRY
A	JG	8-10-15	RELEASED FOR PRODUCTION
REV	BY	DATE	DESCRIPTION
SALCO PRODUCTS, INC.			
PART NAME: QUICK CONNECT 3" FLANGED			
MATERIAL: SEE NOTES			
PROJECT #:	R150803F	SHEET #:	1 OF 1
DRAWING #:	D41783	PART #:	TE4X3S416SF6A
			SCALE: 1:1

THIS PRINT, PROPERTY OF SALCO PRODUCTS INC. CONTAINS PROPRIETARY INFORMATION AND MUST NOT BE COPIED, REPRODUCED, OR USED DETRIMENTALLY TO OUR INTEREST.